

Amethyst Class Newsletter



Leaver's Pantomime

We have been busy rehearsing this week (Mon-Weds) and the panto is already shaping up nicely!

Geography

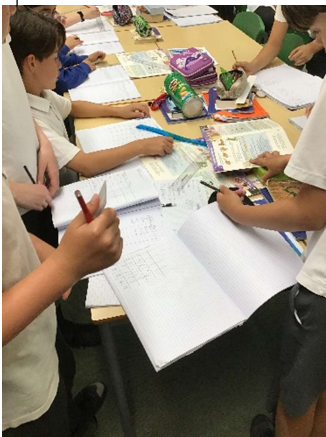
This week we started the Geography part of our project: Know that the landscapes can change due to natural disasters such as floods, volcanoes and earthquakes. We have begun by looking at the structure of the Earth.

Jigsaw

Lesson 3: Babies- from conception through to birth. The children have been amazing in the SRE lessons (last week and this week) and have asked excellent questions- being sensible and sensitive at all times. I have suggested they ask to see any scan pictures and first baby photos at home so they could have some good questions for families at home too!

P.E

Outdoor Education unit- This week was orienteering, which was very popular with the children!



Maths

The children had fun measuring each other's arm spans, digits and cubits to carry out an Egyptian measures challenge!

Home Learning:

Please ensure that all children go over scripts and song words this weekend – we aim to go with out scripts and words next week!

Upcoming Dates....

1st July – Swift Sports experience (wear P.E kit) for year 6 in school

3rd July – KLB transition day

4th July – Chipping Sodbury School Transition day

15th July – Leaver's Pantomime performance to families – 6pm – 8pm